

Figure 2 – Partnership Relationships

The **resin** toolbox

resin tools are processes and templates for collaborative best practice research that guide project partners through six stages:

1. Decision to participate - defines partners' reasons for participating, their interests, governance and relationships
2. Business case – rationale for the research, partners' expectations, commitments and standards
3. Funding – explores options from participant funding to public and private agency research funds, and manages fund acquisition
4. Project management planning – detail of the entire range of activities required
5. Agreements framework – legal documentation, dispute resolution protocols, management of intellectual property
6. Management of the asset – research results defined as assets, commercial outcomes quantified, protection of the asset

Reducing risk

resin tools reduce the risks of collaboration by providing:

- A clear understanding of partners' expectations and reasons for participating
- A robust and complete process for the engagement of partners in collaborative research
- Management of conflicts
- Management of intellectual property issues
- Standards for project management



The energy behind **resin**

Forme Consulting Group

One of New Zealand's most qualified and respected independent forestry consultancies, Forme is based in Tawa, Wellington, and has completed 3000-plus projects. Co-directors John Schrider and Jon Dey have 38 and 34 years respectively in the industry, including the former NZ Forest Service. They provide experienced and cost effective advice from the boardroom to the wood supply chain.

Bruce Easton

With 34-plus years in the forest sector, Bruce Easton has worked extensively in the supply chain area through forest growing, manufacturing, distribution and international markets in New Zealand and offshore. He brings expertise to **resin** from past roles in senior leadership and an international perspective on New Zealand's competitiveness.

For additional information on **resin** contact:

John Schrider

Forme Consulting Group Ltd
 PO Box 56 030, Tawa, Wellington
 Ph 04 232 7155 • Fax: 04 232 9472
 Mob: 027 446 9296 • Email: john@forme.co.nz
www.forme.co.nz



FOREST ENGINEERING RESEARCH

Helping forestry enterprises apply joint research for mutual benefit



What is resin?

Resin is the lifeblood of trees.

Applied research is the lifeblood of productivity in the forestry sector.

resin collaborative research is a fresh new approach that brings forest industry enterprises together to share the cost of applied research.

resin helps parties conduct joint forest engineering research to identify where improvements can be made in the supply chain from stump to mill.

resin facilitates enterprises to apply the research findings and to establish best practice operations in the workplace.

resin outcomes improve workplace productivity and business profitability.

resin outcomes ensure joint research findings are turned into a reusable asset.

resin provides leadership and business frameworks so all parties can work confidently together.

resin is backed by people and resources that provide expert advice, technology and project management disciplines.



Why is resin needed?

No effective forest engineering, harvesting and transportation research has been done for 10 years and strategies for improving productivity have stagnated.

The industry has lost ground in establishing best practices since the Logging Industry Research Organisation (LIRO) ceased operations in 2000. Since then, best practice research results have not been available to the industry.

Enterprises can significantly increase profitability by using applied research to identify where improvements can be made throughout the stump to mill supply chain: from civil engineering, harvesting and extraction of logs from forests to their transportation and inventory management once they are at the mill.

Productivity comes from making the most of the work and time expended by your capital equipment plus skilled people linked to identified best practice.

Why collaborate?

- Shared costs mean reduced costs
- Research information obtained in one job is reusable in another
- Research results are a reusable asset
- Information gathered over time helps establish best practice
- Improved productivity

What type of research?

- Work study of baseline activity measured against costs
- Data capture of:
 - environmental and terrain conditions
 - species, management regime and external constraints
 - operating systems and management practices
 - resources and systems deployed
- Systematic investigation to increase knowledge
- Clear, documented performance expectations

A typical resin collaborative venture

- 2 to 4 members take part
- Finite projects with agreement on objectives
- Specific commercial objectives
- Strategic decision to participate
- Lower risk than individual effort
- Commercial project manager
- Robust and effective reviews including post implementation reviews
- Managing intellectual property and other legal matters

Example

Since late 2006, four East Coast forest companies have been collaborating on a joint harvesting and productivity project – forest owners Juken New Zealand Ltd, Ermslaw One and Hikurangi Forest Farms and forestry services provider PF Olsen.

Research using resin's management system is enabling them to counteract a downward trend in harvesting productivity apparent throughout the industry. They recognise that real progress will only come from research that leads to practical outcomes.

“Already we are getting significant improvements in productivity in the six months since resin managers, who are leaders in their field, have been working with us on this project. The outcomes from the project in Gisborne will be of use to us throughout our New Zealand operations.” Sheldon Drummond Juken New Zealand General Manager Forests

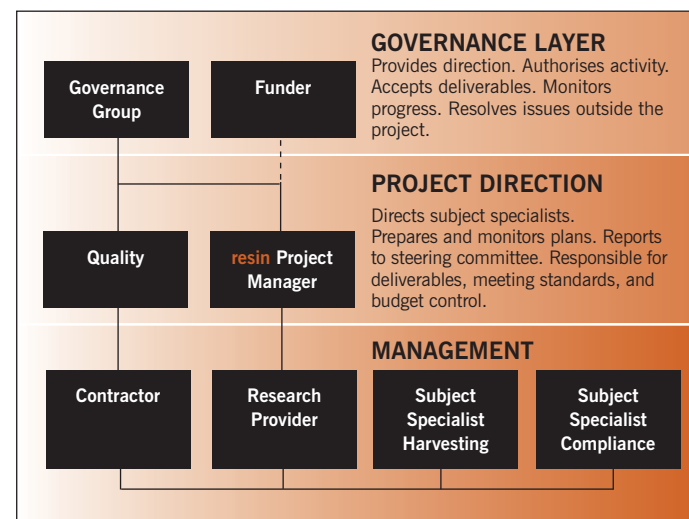


Figure 1 – Management Structure